



# DISCOVER

THE MISSION ADVANTAGE

## Mangos

We leverage our well-connected global sourcing network and vertical integration in Peru to provide a reliable, year-round supply of top mango varieties from premium growing regions.



## Rounds

PRODUCT	SIZES	PACK (CNT.)	PLU*
Keitt	Small: 12, 14	4-kilo box, 5-down box, club box, organic box	4051, 4311
Kent	Large: 8, 9, 10	4-kilo box, 5-down box, club box, organic box	4959, 4584
Tommy Atkins			
Palmer	X-Large: 3, 4, 5, 6, 7	4-kilo box, 5-down box, club box, organic box	3488, 3114
Haden			

\*PLUS VARY BY PRODUCT AND COO



## Honeys / Ataulfos

PRODUCT	SIZES	PACK (CNT.)	PLU*
Honeys / Ataulfos	Small: 18, 20, 22, 24	4-kilo box, 5-down box, club box	4312
	Large: 12, 14, 16	4-kilo box, 5-down box, club box	4961

\*PLUS VARY BY PRODUCT AND COO

Let's Connect!

[mangos@missionproduce.com](mailto:mangos@missionproduce.com)  
805-981-3650

[missionproduce.com](https://missionproduce.com)  
[@mission\\_produce](https://twitter.com/mission_produce)





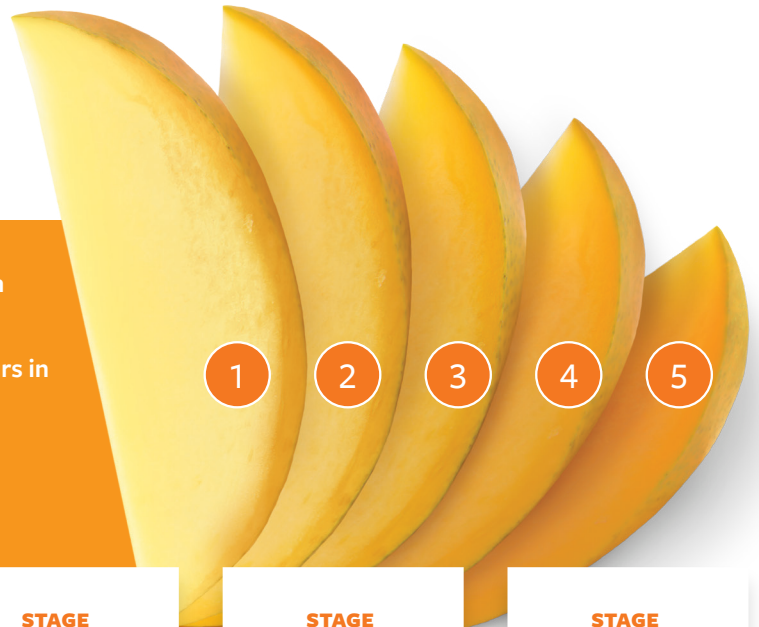
# DISCOVER

THE MISSION ADVANTAGE

## Tailor-Made Ripening Programs

Using a science-based methodology, industry-leading technology and four decades of artistic intuition, our **Ripe Masters** expertly ripen fruit to the precise stage your shoppers are looking for.

- ✓ Drive Demand
- ✓ Maximize Category Sales
- ✓ Reduce Shrink
- ✓ Elite Customer Service From The World's Most Advanced Ripening Network
- ✓ Strategically Located in Key Markets
- ✓ Delivery Within 24 Hours in The U.S. and Canada
- ✓ Order Flexibility & Reliability



STAGE

1

HARD

STAGE

2

FIRM

STAGE

3

FIRM/RIPE

STAGE

4

RIPE

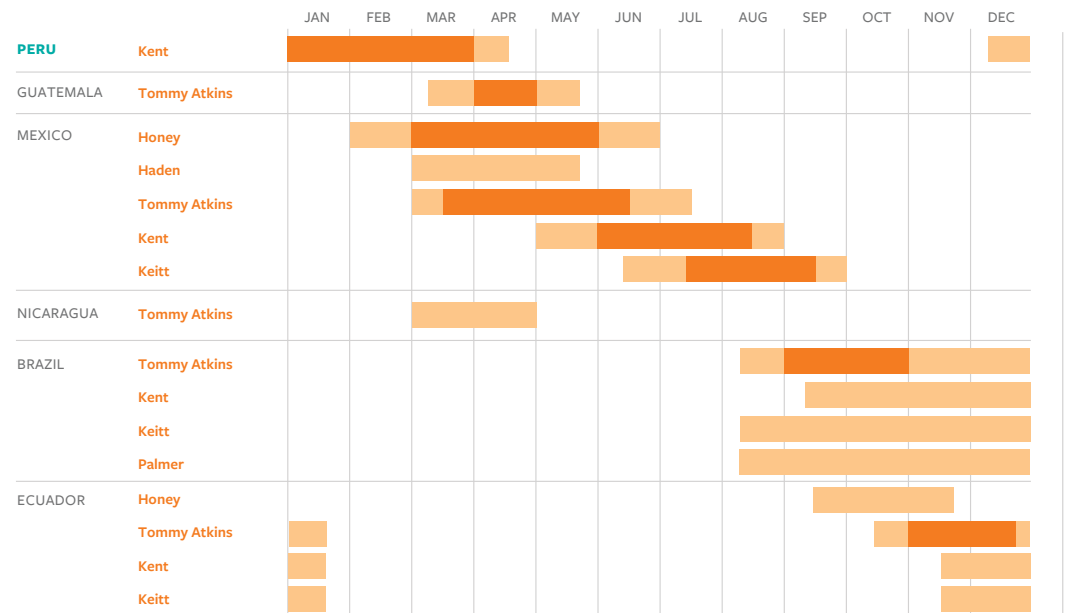
STAGE

5

SOFT/RIPE

\*Based on ripe stages of the Keitt variety  
Complete Mango Color Wheels available upon request

## Mangos – Global Availability



Vertically Integrated growing location

Stronger bar color denotes higher volume. Transition periods can vary slightly dependent on weather, growing conditions, etc.  
Not all origins have access to all markets.

Let's Connect!

[mangos@missionproduce.com](mailto:mangos@missionproduce.com)  
805-981-3650

[missionproduce.com](https://missionproduce.com)  
[@mission\\_produce](https://twitter.com/mission_produce)

